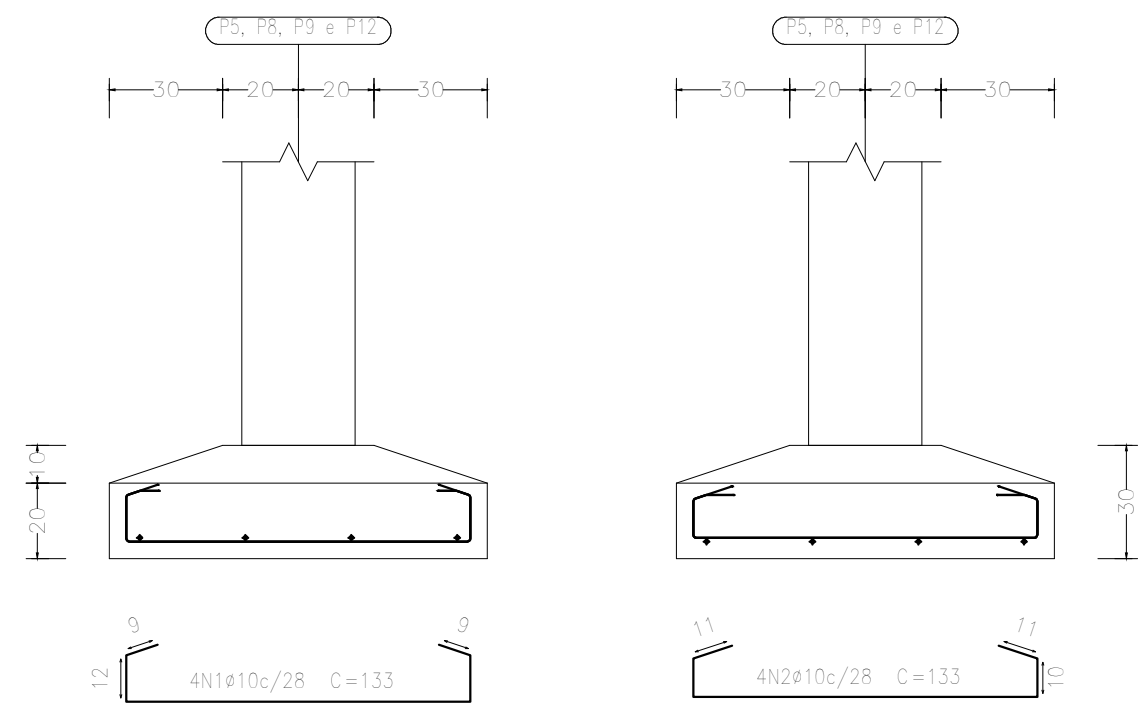
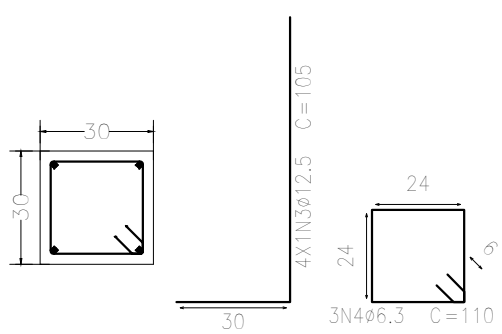


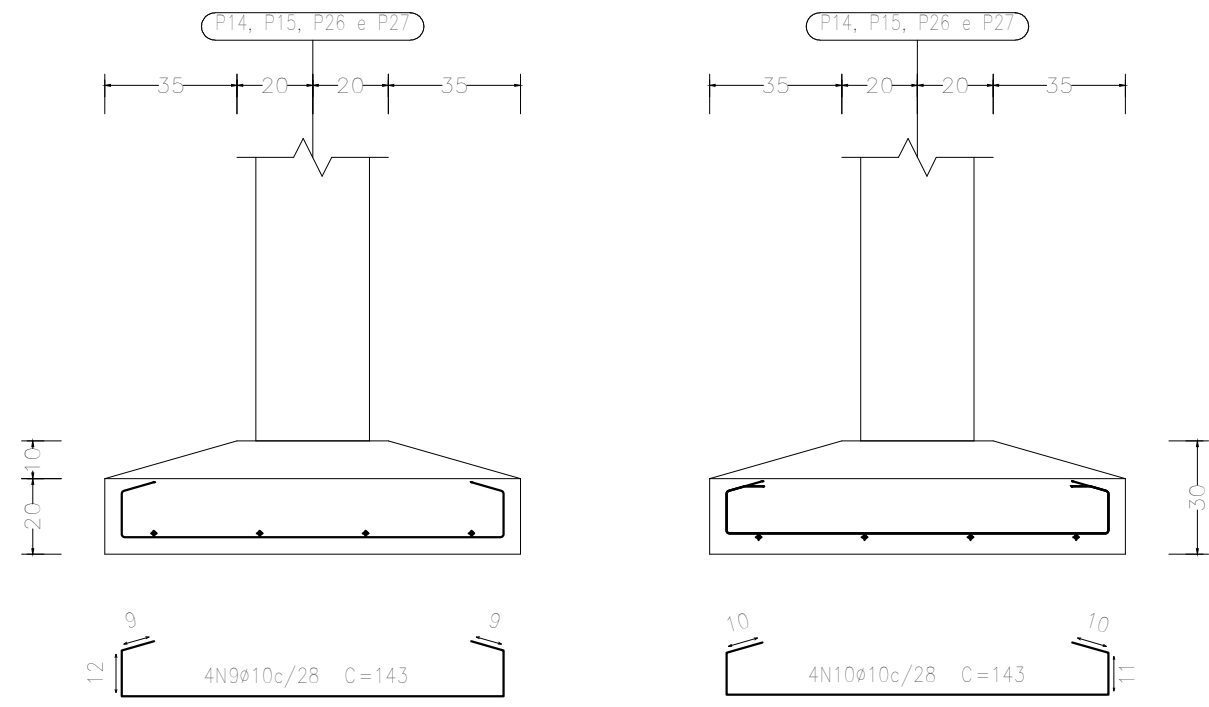
P5, P8, P9 e P12



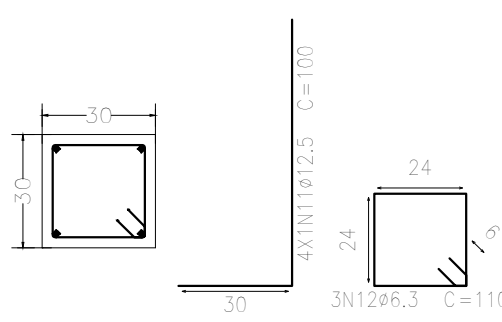
P5, P8, P9 e P12



P14, P15, P26 e P27



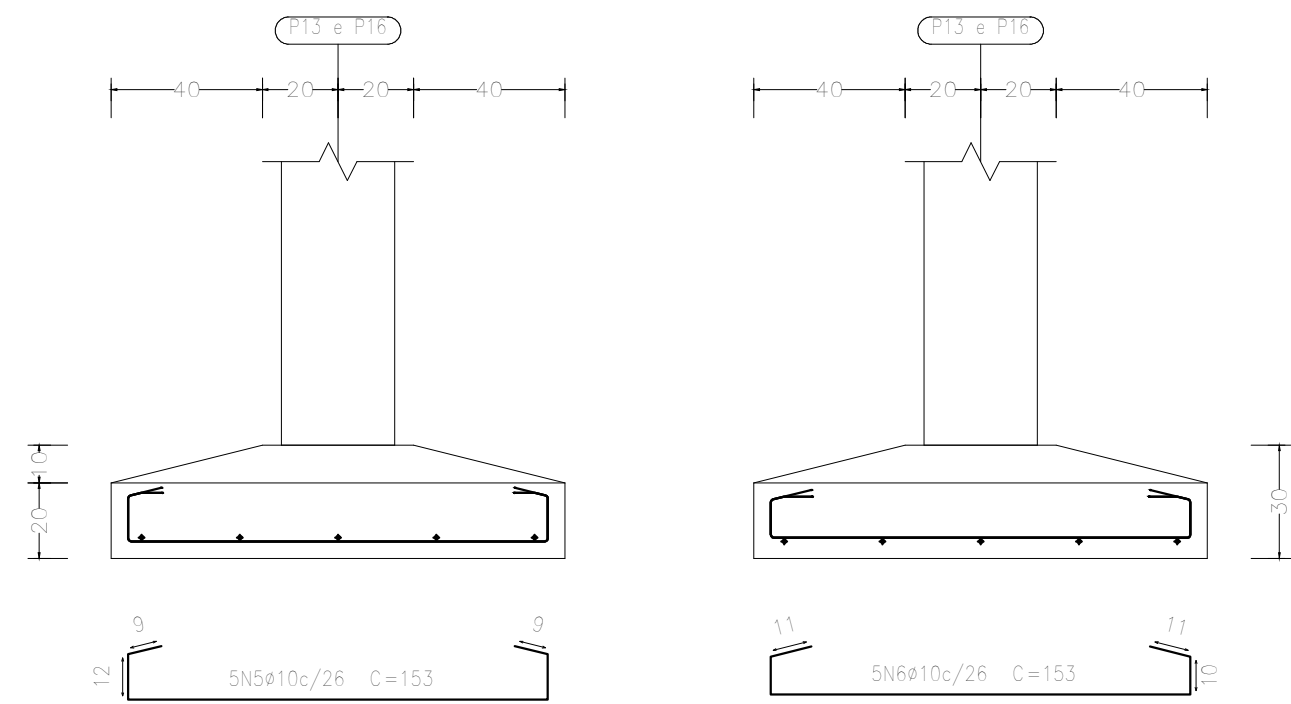
P14, P15, P26 e P27



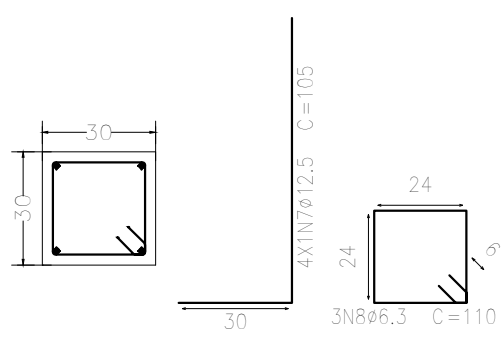
Elemento	Pos.	Diam.	Q.	Dob. (cm)	Ret. (cm)	Dob. (cm)	Comp. (cm)	Total (cm)	CA-50 (kg)	CA-60 (kg)
P5=P8=P9=P12	1	ø10	4		133		133	532	3,3	
	2	ø10	4	30	133		133	532	3,3	
	3	ø12,5	4		75		105	420	4,0	
	4	ø6,3	3		110		110	330	0,8	
Total+10% (x4)									12,5	50,0
P13=P16	5	ø10	5		153		153	765	4,7	
	6	ø10	5	30	153		153	765	4,7	
	7	ø12,5	4		75		105	420	4,0	
	8	ø6,3	3		110		110	330	0,8	
Total+10% (x2)									15,6	31,2
P14=P15=P26=P27	9	ø10	4	9	125	9	143	572	3,5	
	10	ø10	4		143		143	572	3,5	
	11	ø12,5	4	30	70		100	400	3,9	
	12	ø6,3	3		110		110	330	0,8	
Total+10% (x4)									12,9	51,6
P17=P20=P21=P24	13	ø10	5		153		153	765	4,7	
	14	ø10	5		153		153	765	4,7	
	15	ø12,5	4	30	75		105	420	4,0	
	16	ø6,3	3		110		110	330	0,8	
Total+10% (x4)									15,6	62,4
P18=P19=P22=P23	17	ø10	6		153		153	918	5,7	
	18	ø10	6		153		153	918	5,7	
	19	ø12,5	4	30	70		100	400	3,9	
	20	ø6,3	3		110		110	330	0,8	
Total+10% (x4)									17,7	70,8
									ø6,3:	15,8
									ø10:	171,8
									ø12,5:	78,4
									Total:	266,0
										0,0
										0,0

Resumo Aço FUNDAÇÃO	Comp. total (m)	Peso+10% (kg)	Total
Detalhamento fundação			
CA-50	ø6,3	92,4	25
	ø10	367,8	249
	ø12,5	114,8	122
			396

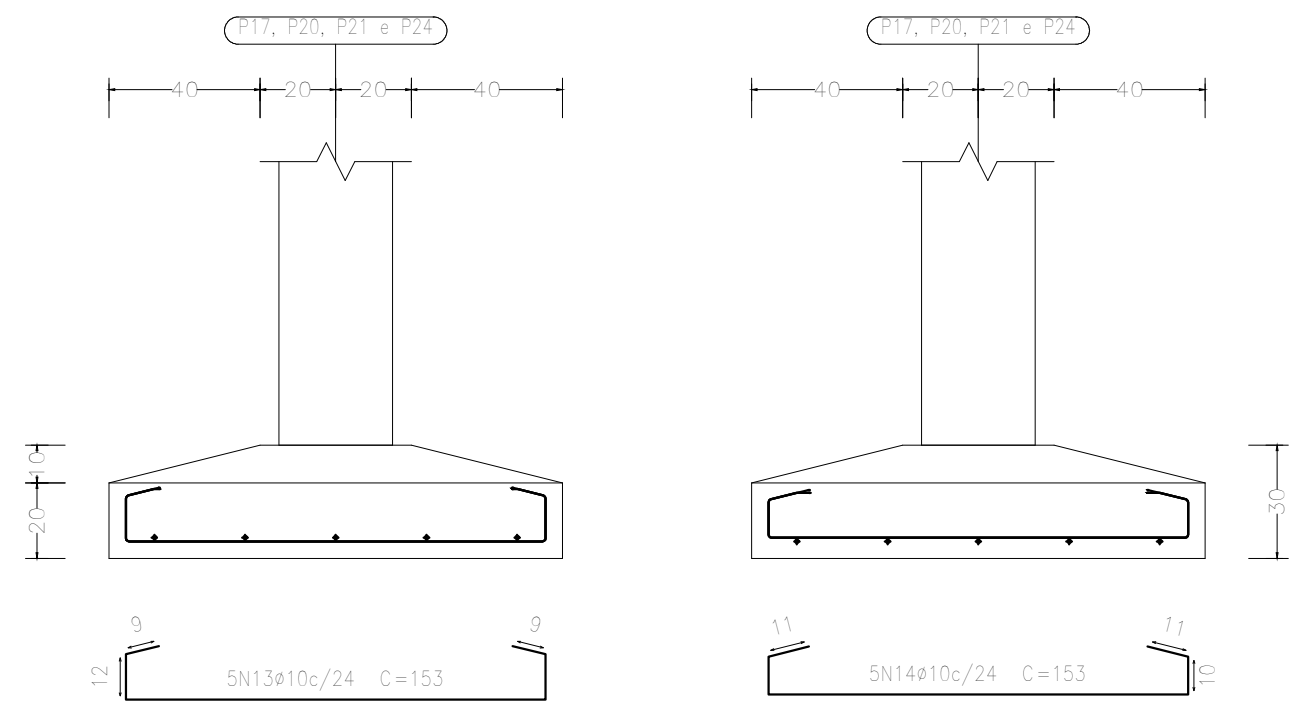
P13 e P16



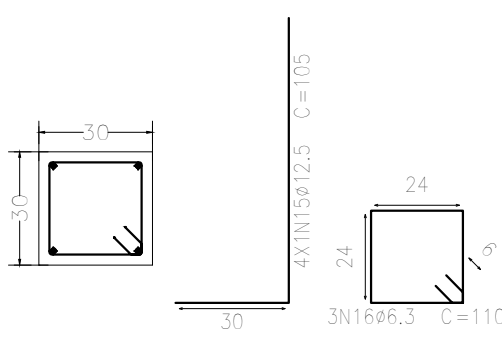
P13 e P16



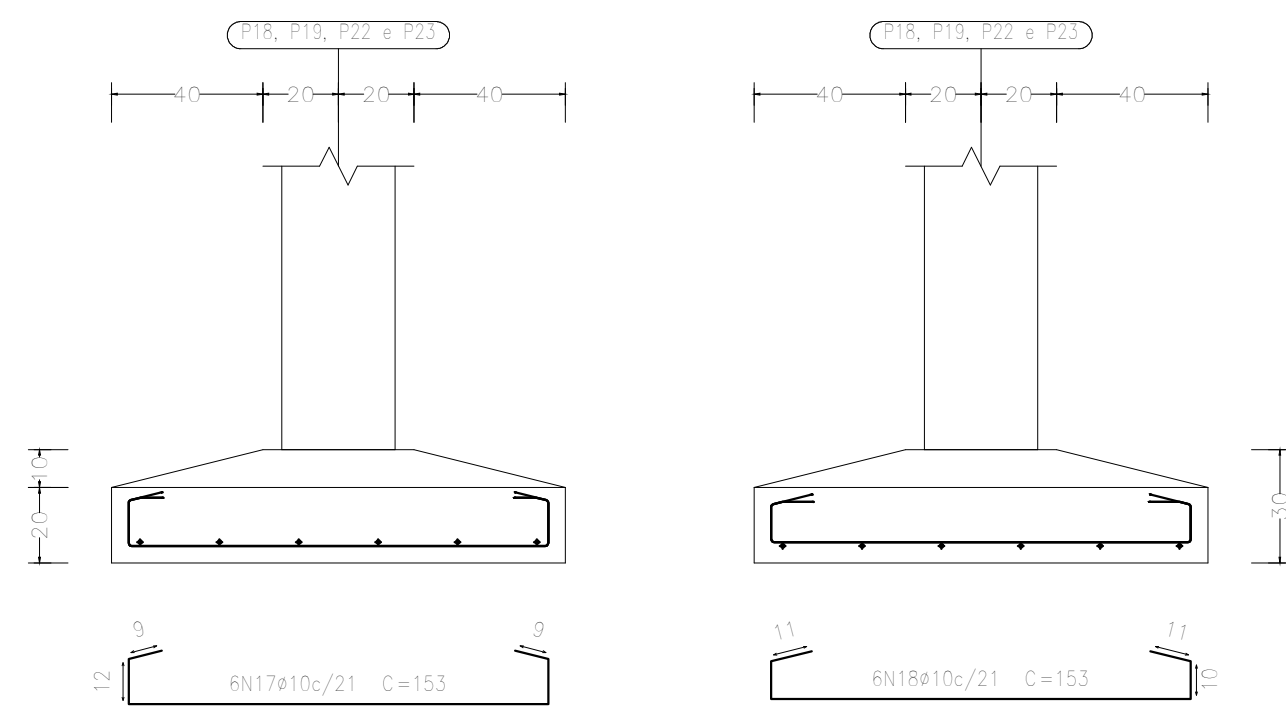
P17, P20, P21 e P24



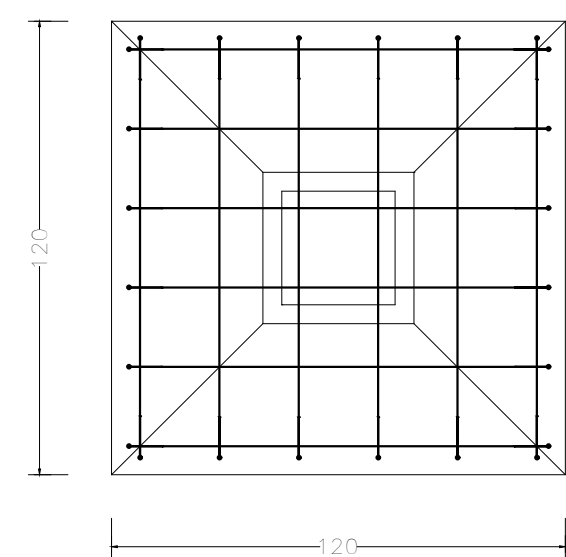
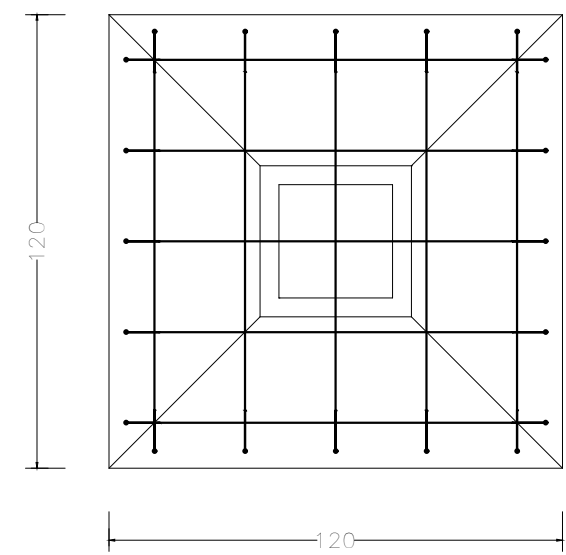
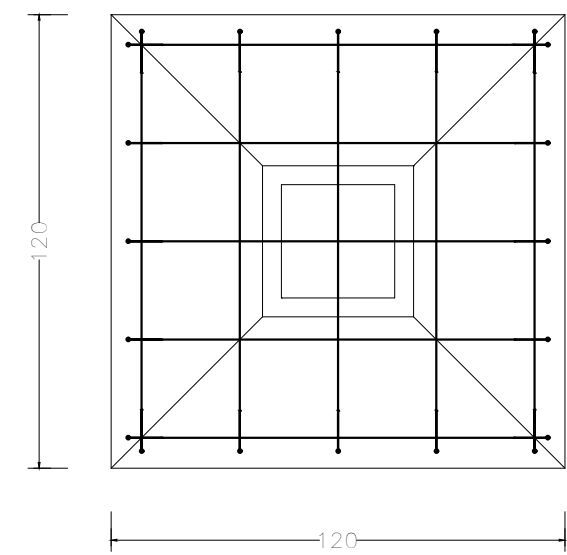
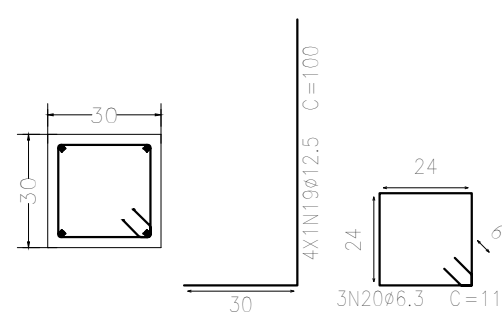
P17, P20, P21 e P24




P18, P19, P22 e P23



P18, P19, P22 e P23



DENIS BOTELHO DA SILVA
Responsável Técnico

AMPLIAÇÃO DO MERCADO MUNICIPAL LELAND BARROS NO MUNICÍPIO DE OLINDA/PE			
AUREA MARQUES			
MUNICÍPIO DE OLINDA/PE			
TÍTULO			
FUNDAÇÃO - Detalhamento Fundação 1		DATA	
RESPONSÁVEL TÉCNICO		INDICAÇÃO	
ENR: DENIS BOTELHO		NOVEMBRO/2025	
CARGA: 100% (100%)		02/08	